

RUDI KOVACKO  
ASSOCIATES

*Adding Value to the Markets we Serve*



# PUMPING – Your prime source for pumps

## GENERAL PURPOSE PUMPS



### Water Transfer & Boiler Feed

- Flows to 5000 usgpm, Heads to 1000 feet
- Cast Iron, 304SS, 316SS
- Water Booster Systems
- Multistage, Vertical and Horizontal configurations

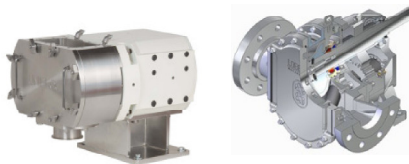
## PROCESS CENTRIFUGAL PUMPS



### Water & Chemical Service

- Flows to 6000 usgpm, Heads to 700 feet
- Cast Iron, 316SS, Exotic Metals, Non-metallic
- Process Applications
- Horizontal, Vertical, Close coupled, magnetic

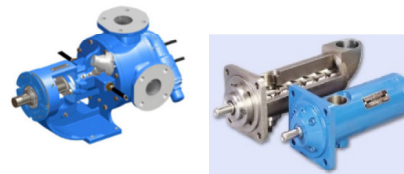
## PROCESS LOBE PUMPS



### Heavy Fluid Pumping

- Flows to 3000 usgpm, Pressure to 170 psi
- Cast Iron, 304SS, 316SS
- Process Applications
- Horizontal, Hopper Style Suction

## GEAR & SCREW PUMPS



### Heavy Fluid Pumping

- Flows to 820 usgpm, Pressure to 3000 psi
- Steel, 304SS, 316SS
- Process Applications
- Horizontal, Vertical Configurations

## SOLIDS HANDLING PUMPS



### Solids Pumping

- Flows to 8000 usgpm, Heads to 500 feet
- Cast Iron, 316SS, Rubber
- Process Applications
- Horizontal, Vertical Configurations

## AIR OPERATED DIAPHRAGM PUMPS



### Transfer and Feed

- Flows to 240 usgpm, Pressure to 120 psi
- Aluminum, Plastic, 304SS, 316SS, Hastelloy C, Teflon
- Process, Transfer Applications
- Horizontal configurations

# PUMPING – Your prime source for pumps

## METERING & PROCESS PUMPS

A MEMBER OF **NIKKISO**  
**LEWA**  
pumps+systems



**MVV**  
GEAR PUMPS

### Precision Metering Pumps

- Flows to 26 usgpm per head, Pressure to 17000 psi
- 316SS, Plastic
- Process Applications
- Multi Head, Horizontal Configurations

## CONTROL & MONITORING



**ITT**  
ENGINEERED FOR LIFE  
**PRO**  
services

### Pump Protection and Health Monitoring

- Variable Frequency Drives
- Pump Protection from Upset Conditions
- Pump Health Status Indicator

## HIGH PRESSURE PUMPS



**GOULDS PUMPS**

**GOULDS**  
WATER TECHNOLOGY  
a xylem brand

**FAT PUMPS**

### Water Transfer & Boiler Feed

- Flows to 3000 usgpm, Pressure to 5000 psi
- Cast Iron, 304SS, 316SS
- Water and Chemical Services
- Multistage, Vertical and Horizontal Configurations

## SUBMERSIBLE PUMPS



**GOULDS**  
WATER TECHNOLOGY  
a xylem brand

**TSURUMI PUMP**

**BARNES**

### Sump, Drainage & Dewatering

- Flows to 5700 usgpm, Heads to 600 feet
- Cast Iron, 304SS, 316SS
- Sump and Dewatering Services
- Submersible Configurations

## SUMP PUMPS



**GOULDS PUMPS**

**C I  
P C**

### Sump Transfer

- Flows to 3000 usgpm, Heads to 340 feet
- Cast Iron, 304SS, 316SS, High Chrome Iron
- Sump Services
- Vertical, Submersible Configurations

## GRINDERS AND CHOPPERS

**VOGELSANG**



### Solids Handling

- Flows to 4400 usgpm, Pressure to 170 psi
- Cast Iron, Steel, 304SS, 316SS
- Solids Size Reduction
- Horizontal, Hopper Configurations